



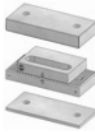






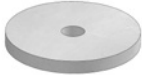
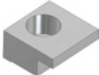



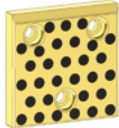







Die Components Normalien Componenti



OMCR[®]
STANDARD DIE COMPONENTS

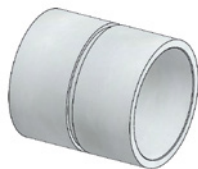
<p>B2 2101 16</p>  <p>Bush for lifting pin Buchse für Tragbolzen Boccola per perno di sollevamento</p> <p>140</p>	<p>B2 2305 16</p>  <p>Gage Einweiser Riferimento</p> <p>140</p>	<p>B2 2305 17</p>  <p>Gage hardened Einweiser gehärtet Riferimento indurito</p> <p>141</p>	<p>B2 2305 22</p>  <p>Gage for sensor Einweiser für Teillagekontrolle Riferimento per sensore</p> <p>141</p>	<p>B2 2305 22</p>  <p>Gage for sensor Einweiser für Teillagekontrolle Riferimento per sensore</p> <p>142</p>
<p>B2 2305 24</p>  <p>Gage for sensor Einweiser für Teillagekontrolle Riferimento per sensore</p> <p>142</p>	<p>B2 2305 24</p>  <p>Gage for sensor Einweiser für Teillagekontrolle Riferimento per sensore</p> <p>143</p>	<p>B2 2506 12</p>  <p>Hook for chute Haken Gancio</p> <p>143</p>	<p>B2 2604 12</p>  <p>Air pin Druckbolzen Candela</p> <p>144</p>	<p>B2 2615 002</p>  <p>Air pin Druckbolzen Candela</p> <p>145</p>
<p>B2 2625 11</p>  <p>Retainer Sicherungsplatte Piastrina</p> <p>146</p>	<p>B2 2625 11</p>  <p>Retainer Sicherungsplatte Piastrina</p> <p>146</p>	<p>B2 2705 11</p>  <p>Stop block Abstandsblock Distanziale</p> <p>147</p>	<p>B2 2705 11</p>  <p>Stop block Abstandsblock Distanziale</p> <p>147</p>	<p>B2 2705 11</p>  <p>Shim Ausgleichs Scheib Spessore</p> <p>147</p>
<p>B2 2708 11</p>  <p>Spacer Distanzstück Distanziale</p> <p>148</p>	<p>B2 2709 11</p>  <p>Backing plate Distanzkappe Reazione per cilindro</p> <p>149</p>	<p>B2 2709 20</p>  <p>Backing plate Distanzkappe Reazione per cilindro</p> <p>149</p>	<p>B2 2715 11</p>  <p>Locating cone Kegeldistanz Cono di centraggio</p> <p>150</p>	<p>B2 2715 11</p>  <p>Shim Ausgleichs Scheib Spessore</p> <p>150</p>

<p>B2 2715 14</p>  <p>Locating cone Kegeldistanz Cono di centraggio</p> <p>151</p>	<p>B2 2715 14</p>  <p>Shim Ausgleichs Scheib Spessore</p> <p>151</p>	<p>B2 2717 12a -13a</p>  <p>Spacer plate toothed Distanzplatte gezahnt Tassello di compensazione</p> <p>152</p>	<p>B2 2904 9</p>  <p>Retainer Sicherungsplatte Piastrina</p> <p>152</p>	<p>B2 2904 11</p>  <p>Retaining bolt Sicherungsbolzen Perno di bloccaggio</p> <p>153</p>
<p>B2 2920 001</p>  <p>Guide post Führungssäule Colonna guida</p> <p>154</p>	<p>B2 2920 001</p>  <p>Guide post Führungssäule Colonna guida</p> <p>155</p>	<p>B2 2920 001</p>  <p>Guide post Führungssäule Colonna guida</p> <p>156</p>	<p>B2 2920 001</p>  <p>Guide post Führungssäule Colonna guida</p> <p>157</p>	<p>B2 2920 001</p>  <p>Washer Federscheibe Rondella per colonne</p> <p>158</p>
<p>B2 2920 001</p>  <p>Toe clamp Haltestück Ritegno per boccola</p> <p>158</p>	<p>B2 2933 1</p>  <p>Guide bush DIN 9834 Führungsbuchse DIN 9834 Boccola DIN 9834</p> <p>159</p>	<p>B2 2933 2</p>  <p>Guide bush Führungsbuchse Boccola</p> <p>159</p>	<p>B2 2933 2</p>  <p>Guide bush Führungsbuchse Boccola</p> <p>160</p>	<p>B2 2960 12</p>  <p>Wear plate VDI 3357 Gleitplatte VDI 3357 Piastra guida VDI 3357</p> <p>161</p>
<p>B2 2960 12</p>  <p>Wear plate VDI 3357 Gleitplatte VDI 3357 Piastra guida VDI 3357</p> <p>162</p>	<p>B2 2961 11</p>  <p>Wear plate VDI 3357 Gleitplatte VDI 3357 Piastra guida VDI 3357</p> <p>163</p>	<p>B2 2961 11</p>  <p>Wear plate VDI 3357 Gleitplatte VDI 3357 Piastra guida VDI 3357</p> <p>164</p>	<p>B2 2969 11</p>  <p>Gib VDI 3387 Führungslasche VDI 3387 Guida VDI 3387</p> <p>165</p>	<p>B2 2975 11</p>  <p>Guide bar VDI 3357 Führungsleiste VDI 3357 Lardone VDI 3357</p> <p>165</p>

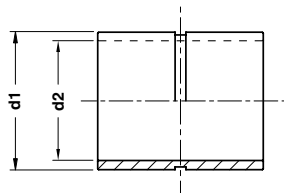
B2 2978 21	B2 2978 21	B2 2978 21	B2 2978 21	B2 2978 23
				
"V" driver VDI 3357 Prismenführung VDI 3357 Guida a "V" VDI 3357	"V" driver VDI 3357 Prismenführung VDI 3357 Guida a "V" VDI 3357	"V" driver VDI 3357 Prismenführung VDI 3357 Guida a "V" VDI 3357	"V" driver VDI 3357 Prismenführung VDI 3357 Guida a "V" VDI 3357	Distance plate for "V" driver Höhenausgleich für Prismenführung Distanziale per guida a "V"
166	166	167	167	168
B2 3001 021	B2 3001 021	B2 3001 021	B2 3001 021	B2 3001 021
				
Slide stop block Schieberranschlag Arresto slitta	Slide stop block Schieberranschlag Arresto slitta	Anti-rebound elastomer Dämpfungselement Ammortizzatore antirimbalzo	Slide stop block Schieberranschlag Arresto slitta	Anti-rebound elastomer Dämpfungselement Ammortizzatore antirimbalzo
168	169	169	170	170
B2 3302 21	B2 3302 21	B2 3602 15	B2 3602 15	B2 3765 1
				
Coupling plate Befestigungsplatte Staffa di reazione	Coupling nut Kupplungsmutter Aggancio staffa	Shim Prägestempel Spessore	Visual locator setting punch Stempel f. entgasungsnoppen Punzone di visualizzazione	Key Passfeder Chiavetta
171	171	172	172	173
B2 3925 11	B2 4010 1	B2 4068 1	B2 4068 2	B2 4069 1
				
Elastomer spring pin Aufnahmebolzen Perno per molle	Backing plate Distanzkappe Reazione per cilindro	Locating pin Zentrierbolzen Centraggio	Locating pin Zentrierbolzen Centraggio	Key Passfeder Chiavetta
173	174	174	175	175

B2 5601 11	B2 5602 11	B2 5602 12	B2 5605 11	B2 5605 11a
				
Lifting pin Tragbolzen mit Fallringsicherung Perno di sollevamento	Lifting bracket with rope stop safety Tragzapfen mit Seilsicherung Staffa di sollevamento con sicurezza fermafune	Lifting pin VDI 3366 Tragschraube VDI 3366 Perno di sollevamento VDI 3366	Lifting bracket with pin and locating pins Tragwange mit Tragbolzen und Zentrierbolzen Staffa di sollevamento completa di perno e centraggi	Lifting bracket with pin and keys Tragwange mit Tragbolzen und Passfeder Staffa di sollevamento completa di perno e chivette
176	177	178	179	180
B2 5605 12	B2 5702 12	B2 5702 12	B2 6201 11	B2 6201 12
				
Lifting pin Tragbolzen mit Fallringsicherung Perno di sollevamento	Pad retainer pin Steckbolzen Perno di arresto	Pad retainer pin Steckbolzen Perno di arresto	Washer Scheibe Rondella	Spacer tube Distanzbuchse Tubo distanziale
181	182	182	183	183
B2 6202 1	B2 6202 1	B2 6202 1	B2 6204 12	
				
Buffer Stossdämpfer Ammortizzatore	Washer Scheibe Rondella	Washer Scheibe Rondella	Shock absorber Halteelement Ammortizzatore	
184	184	184	185	

BUSH FOR LIFTING PIN - BUCHSE FÜR TRAGBOLZEN - BOCCOLA PER PERNO DI SOLLEVAMENTO



FORM A



FORM B

Notes

Material: Si35

STOCK

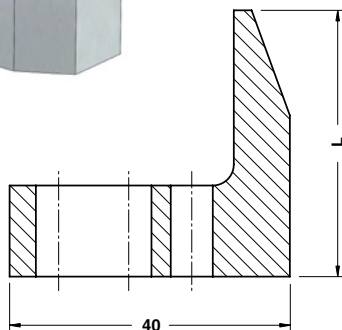
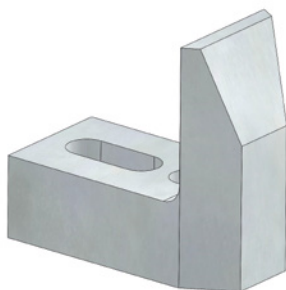


BMW CODE

2 173 600

BMW CODE	d1	d2	FORM
2 173 599	44	34	A
2 173 600	52	42	A
2 173 601	62	52	A
2 173 602	75	65	A
2 173 603	100	78	B
2 173 604	105	78	B

GAGE - EINWEISER - RIFERIMENTO



Notes

Material: 21MnCr5 - HRC: 58÷60

STOCK

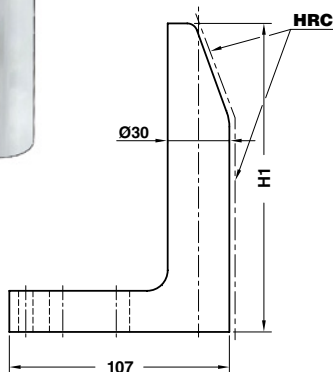
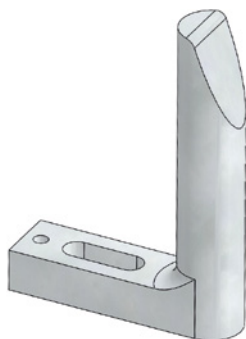


BMW CODE

2 175 120

BMW CODE	L
2 175 119	28
2 175 120	38
2 175 121	48
5 792 350	68
5 792 351	88

GAGE HARDENED - EINWEISER GEHÄRTET - RIFERIMENTO INDURITO



Notes

Material: CK60 - **HRC:** 58+60

STOCK



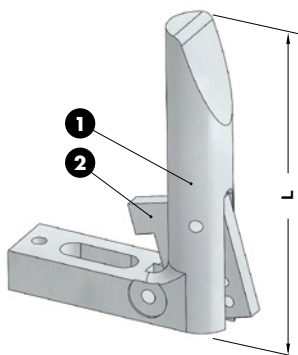
BMW CODE

2 173 836

BMW CODE	H1
2 173 835	65
2 173 836	90
2 173 837	120
2 173 838	150
2 173 839	180
2 175 927	210
2 173 840	250
2 175 127	300
2 175 128	350

Standard BMW

GAGE FOR SENSOR - EINWEISER FÜR TEILLAGEKONTROLLE - RIFERIMENTO PER SENSORE



STOCK

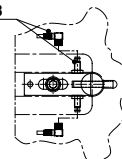


Notes

- 1** Material: CK60
- 2** Material: Si37 - HRC: 50+55

Application example

B2 3503 23

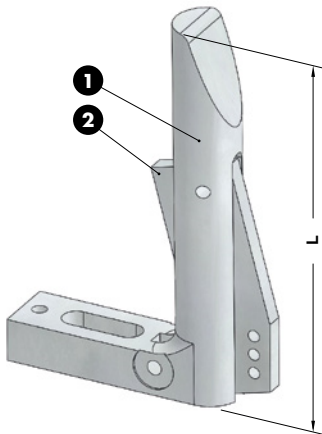


BMW CODE

2 173 842

BMW CODE	L	Sensor
2 173 841	120	included
2 173 842	120	not included
2 173 843	150	included
2 173 844	150	not included

GAGE FOR SENSOR - EINWEISER FÜR TEILLAGEKONTROLLE - RIFERIMENTO PER SENSORE



STOCK

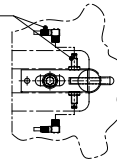


Notes

- 1** Material: CK60
- 2** Material: Si37 - HRC: 50±55

Application example

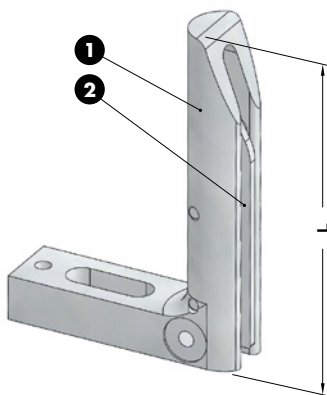
B2 3503 23



BMW CODE
2 173 846

BMW CODE	L	Sensor
2 173 845	180	included
2 173 846	180	not included
2 173 847	250	included
2 173 848	250	not included

GAGE FOR SENSOR - EINWEISER FÜR TEILLAGEKONTROLLE - RIFERIMENTO PER SENSORE



STOCK



Notes

- 1** Material: CK60
- 2** Material: Si37 - HRC: 58±60

Only for replacement
Nur für Reparatur
Solo per riparazione

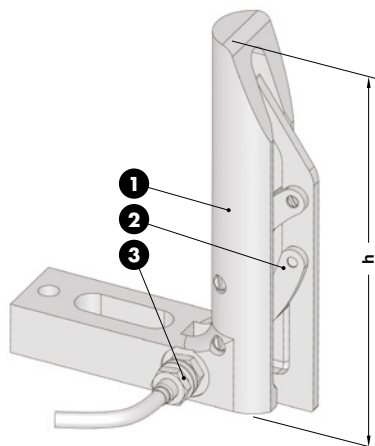


BMW CODE
2 173 850

BMW CODE	L
2 173 849	120
2 173 850	150
2 173 851	180
2 173 852	250
2 173 853*	250

* With short plate
Mit Kurzschild
Con piastra corta

GAGE WITH SENSOR - EINWEISER MIT TEILLAGEKONTROLLE - RIFERIMENTO CON SENSORE

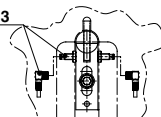


Notes

- 1 Material:** CK60 - **HRC:** 58÷60
- 2 Material:** 16MnCr5 - **HRC:** 58÷60
- 3** Proximity sensor with cable coupling

Application example

B2 3503 23

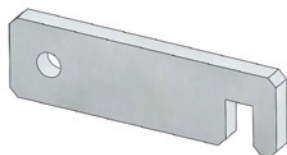


BMW CODE
2 175 999

BMW CODE	h
2 175 998	120
2 175 999	150
2 176 000	180
2 176 001	250

Standard BMW

HOOK FOR CHUTE - HAKEN - GANCIO



Notes

Material: Si37

STOCK



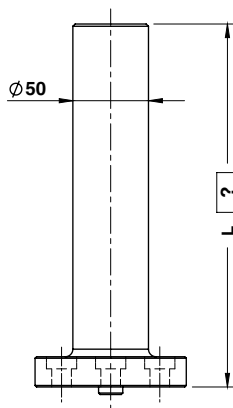
BMW CODE
2 168 287

BMW CODE
2 168 287

AIR PIN - DRUCKBOLZEN - CANDELA



FORM A



FORM B



FORM C



85 < L ≤ 500 mm

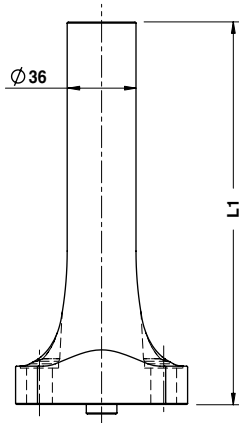
Notes

Material: CK45 - 800±1000 N/mm²



ORDER EXAMPLE 	BMW CODE	L=355
	6 293 157	355
BMW CODE		FORM
6 293 156		A
6 293 157		B
6 293 158		C

AIR PIN - DRUCKBOLZEN - CANDELA



Notes

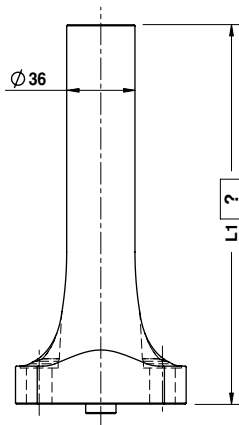
Material: 42CrMo4
800±1000 N/mm²



ORDER EXAMPLE	BMW CODE	
	2 175 218	
BMW CODE	L1	
2 175 217	150	
2 175 218	175	
2 175 219	200	
2 175 220	225	
2 175 221	250	

Standard BMW

AIR PIN - DRUCKBOLZEN - CANDELA



L max = 250 mm

Notes

Material: 42CrMo4
800±1000 N/mm²



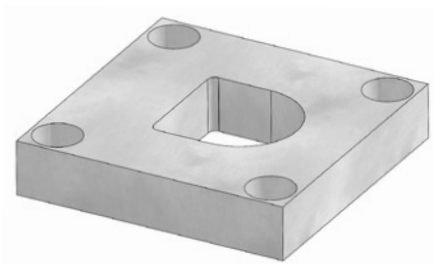
ORDER EXAMPLE	BMW CODE	L1=185
	2 175 222	185
BMW CODE		
2 175 222		

RETAINER - SICHERUNGSPLATTE - PIASTRINA**Notes****Material:** St37**STOCK****BMW CODE**

2 171 716

BMW CODE

2 171 716

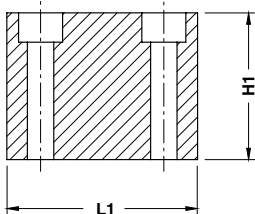
RETAINER - SICHERUNGSPLATTE - PIASTRINA**Notes****Material:** 90MnCrV8 - **HRC:** 60÷62**STOCK****BMW CODE**

2 172 935

BMW CODE

2 172 935

STOP BLOCK - ABSTANDSBLOCK - DISTANZIALE



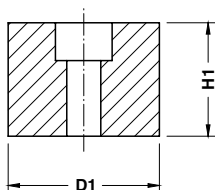
STOCK

Notes		
Material: St37		

ORDER EXAMPLE	BMW CODE
	2 175 075

BMW CODE	L1	H1
2 175 074	65	30
2 175 075	65	50
2 175 076	100	30
2 175 077	100	50
2 175 375	80	30
2 175 376	100	30

STOP BLOCK - ABSTANDSBLOCK - DISTANZIALE



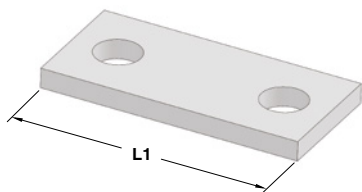
Notes		
Material: CK45		

STOCK

ORDER EXAMPLE	BMW CODE
	2 175 079

BMW CODE	D1	H1
2 175 078	40	30
2 175 079	40	50

SHIM - ABSTIMMSCHEIBE - SPESSORE



Notes		
Material: St52		

STOCK

ORDER EXAMPLE	BMW CODE
	6554390

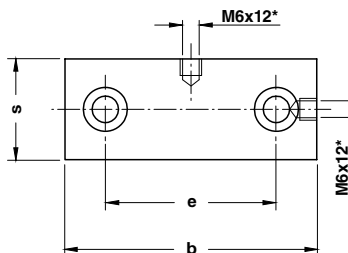
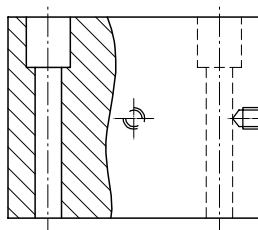
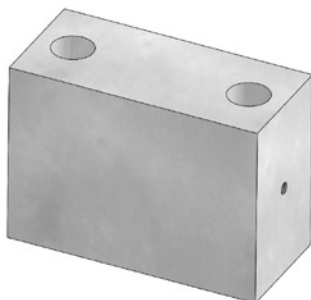
BMW CODE	L1
6554389	65
6554390	100

SPACER - DISTANZSTÜCK - DISTANZIALE

Notes

Material: St37

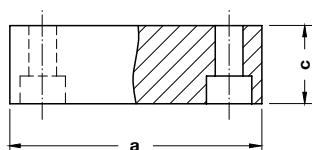
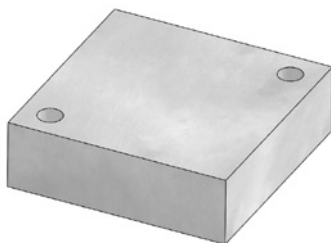
STOCK



BMW CODE
2 172 065

BMW CODE	b	e	s	Max load (kN)	BMW CODE *(without thread M6)	b	e	s	Max load (kN)
2 172 064	65	35	30	270	2 173 866	65	35	30	270
2 172 065	100	68	40	700	2 173 867	100	68	40	700
2 168 316	160	98	40	1100	2 173 868	160	98	40	1100
2 172 066	110	78	50	1000	2 173 869	110	78	50	1000
2 168 317	180	114	50	1600	2 173 870	180	114	50	1600
2 172 067	130	90	60	1500	2 173 871	130	90	60	1500
2 175 145	130	90	60	1500	2 175 146	130	90	60	1500
2 168 318	200	130	60	2300	2 173 872	200	130	60	2300
2 174 518	200	125	60	2300	2 174 519	200	125	60	2300
2 168 319	160	115	80	2350	2 173 873	160	115	80	2350
2 175 003	160	115	80	2350	2 175 004	160	115	80	2350
2 168 320	250	160	80	3650	2 173 874	250	160	80	3650
2 174 520	250	155	80	3650	2 174 521	250	155	80	3650

BACKING PLATE - DISTANZKAPPE - REAZIONE PER CILINDRO



Notes

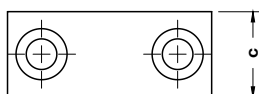
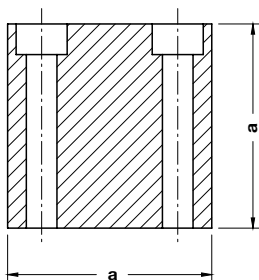
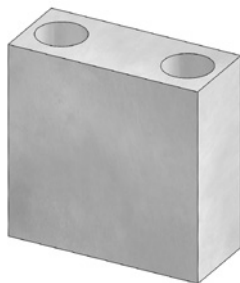
Material: 90MnCrV8 - **HRC:** 49÷52

STOCK

BMW CODE	a	c
2 171 493	60	48
2 171 494	60	43
2 171 495	70	39
2 171 496	100	36
2 171 497	100	31
2 172 219	60	30
2 172 220	60	25
2 172 221	70	20
2 172 222	100	20
2 172 223	100	15

Standard BMW

BACKING PLATE - DISTANZKAPPE - REAZIONE PER CILINDRO



Notes

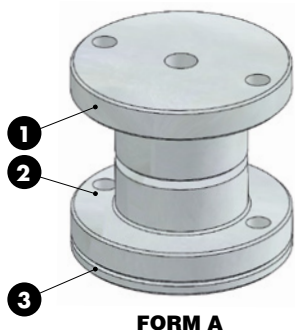
Material: 90MnCrV8 - **HRC:** 49÷52

Only for replacement
Nur für Reparatur
Solo per riparazione

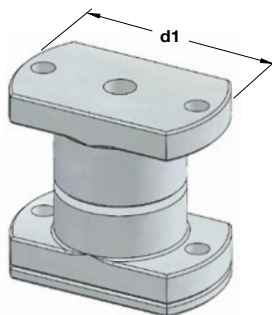
STOCK

BMW CODE	Nom. load (daN)	a	c
2 173 596	750÷1500	60	25
2 173 597	3000	70	25
2 173 598	5000÷7500	100	30

LOCATING CONE - KEGELDISTANZ - CONO DI CENTRAGGIO



FORM A



FORM B

Notes

1 2

Material: 16MnCr5 - **HRC:** 60÷62

3 Material: CK45

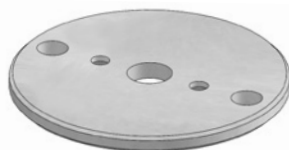


BMW CODE

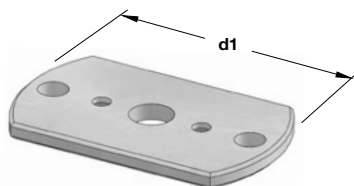
2 171 883

BMW CODE	d1	FORM
2 171 882	100	A
2 171 883	100	B
2 171 884	120	A
2 171 885	120	B

SHIM - ABSTIMMSCHEIBE - SPESSORE



FORM A



FORM B

Notes

Material: CK45

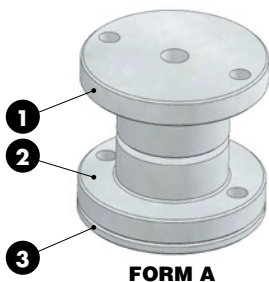


BMW CODE

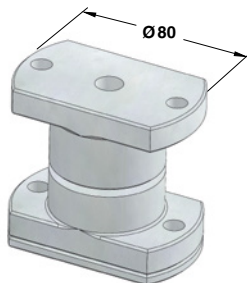
2 171 887

BMW CODE	d1	FORM
2 171 886	100	A
2 171 887	100	B
2 171 888	120	A
2 171 889	120	B

LOCATING CONE - KEGELDISTANZ - CONO DI CENTRAGGIO



FORM A



FORM B

Notes

1 2

Material: 16MnCr5 - **HRC:** 60÷62

3 Material: CK45



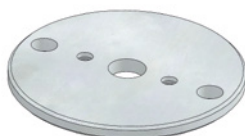
BMW CODE

2 173 124

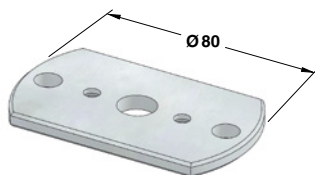
BMW CODE	FORM
2 173 123	A
2 173 124	B

Standard BMW

SHIM - ABSTIMMSCHEIBE - SPESSORE



FORM A



FORM B

Notes

Material: CK45

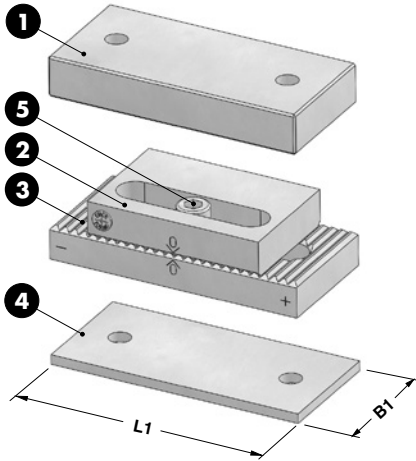


BMW CODE

2 173 126

BMW CODE	FORM
2 173 125	A
2 173 126	B

SPACER PLATE TOOTHED - DISTANZPLATTE GEZAHNT - TASSELLO DI COMPENSAZIONE



Notes

1 2 3

Material: 90MnCrV8 - **HRC:** 58÷60

4 Material: Si52

5 DIN 912

STOCK

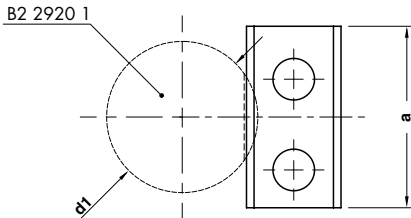


BMW CODE	2 171 715
-----------------	------------------

BMW CODE	B1	L1	*
2 171 714	60	130	12a
2 171 715	80	160	13a

B2 2904 9

RETAINER - SICHERUNGSPLATTE - PIASTRINA



Notes

Material: Si37

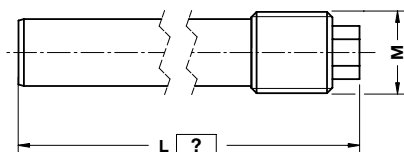
STOCK



BMW CODE	2 174 517
-----------------	------------------

BMW CODE	a	d1
2 174 516	40	25÷32
2 174 517	48	40÷50

RETAINING BOLT - SICHERUNGSBOLZEN - PERNO DI BLOCCAGGIO



Notes

Material: CK45

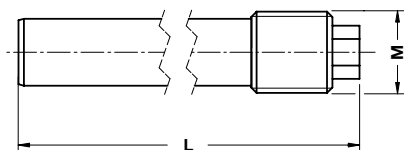


BMW CODE	L=240
2 174 247	240

BMW CODE	L	M
2 174 247	≤ 300	M 30

Standard BMW

RETAINING BOLT - SICHERUNGSBOLZEN - PERNO DI BLOCCAGGIO



Notes

Material: CK45



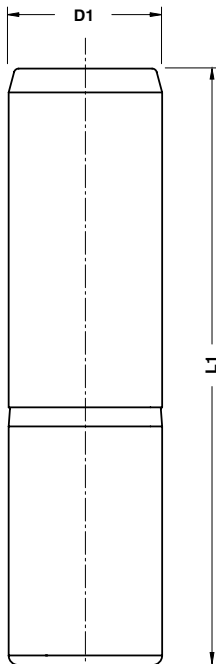
BMW CODE
2 174 246

BMW CODE	L	M
2 174 780	180	M 30
2 174 246	230	M 30
2 175 009	200	M 20

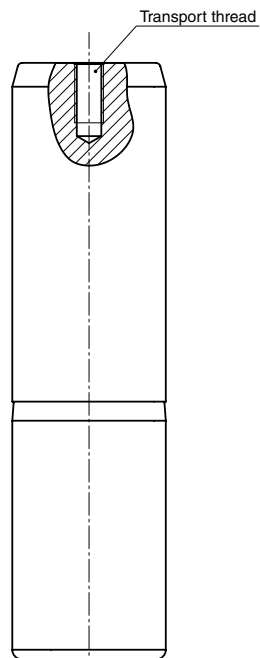
GUIDE POST - FÜHRUNGSSÄULE - COLONNA GUIDA

Notes

Material: 16MnCr5 - HRC 60÷62



FORM A



FORM B

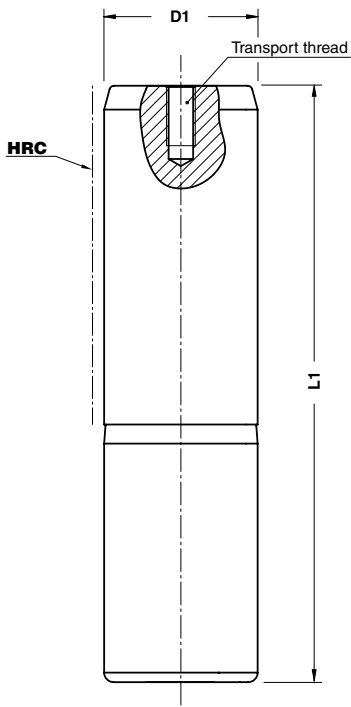
	BMW CODE
	2 168 678

BMW CODE	D1	L1	FORM	BMW CODE	D1	L1	FORM
2 168 677	63	200	A	2 168 682	80	250	B
2 168 678	63	250	A	2 168 684	80	280	B
2 175 085	63	280	A	2 168 686	80	315	B
2 168 679	63	315	A	2 168 688	80	355	B
2 168 680	63	355	A				

GUIDE POST - FÜHRUNGSSÄULE - COLONNA GUIDA

Notes

Material: 16MnCr5 - HRC 60÷62



Standard BMW

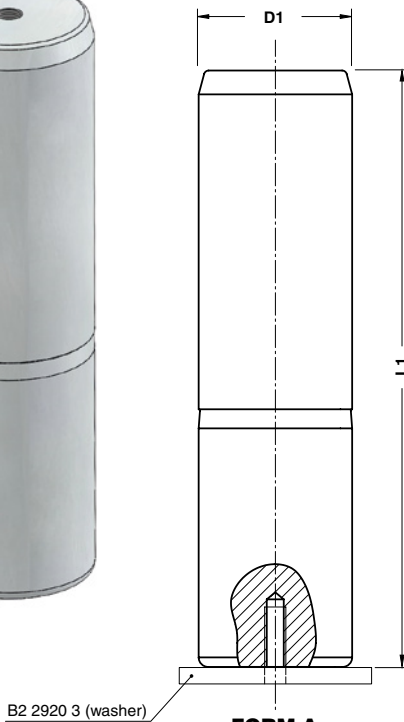
	BMW CODE
	2 175 006

BMW CODE	D1	L1	BMW CODE	D1	L1
2 175 005	80	250	2 171 214	100	355
2 175 006	80	280	2 171 216	100	400
2 175 007	80	315	2 171 218	125	355
2 175 008	80	355	2 172 239	125	400
2 174 777	100	280	2 171 220	125	450
2 174 778	100	315			

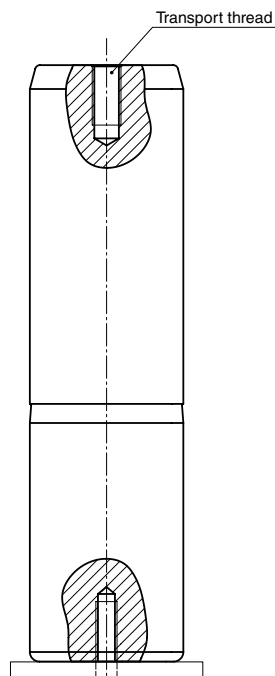
GUIDE POST - FÜHRUNGSSÄULE - COLONNA GUIDA

Notes

Material: 16MnCr5 - HRC 60÷62



FORM A



FORM B



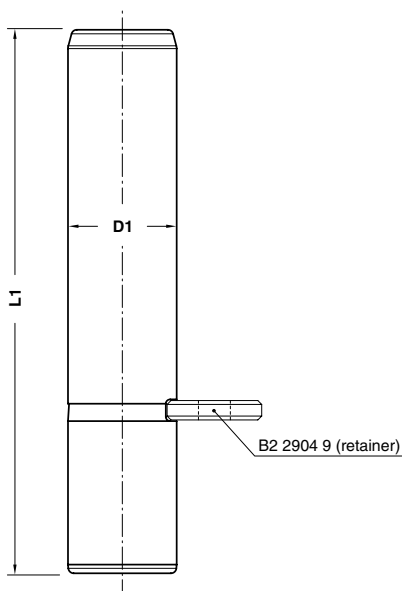
BMW CODE
2 173 907

BMW CODE	D1	L1	FORM	Washer Code	BMW CODE	D1	L1	FORM	Washer Code	BMW CODE	D1	L1	FORM	Washer Code
2 173 906	40	160	A	2173912	2 173 914	50	200	A	2173919	2 175 086	63	280	A	2173925
2 173 907	40	180	A	2173912	2 173 915	50	250	A	2173919	2 173 922	63	315	A	2173925
2 173 908	40	200	A	2173912	2 173 916	50	280	A	2173919	2 173 923	63	355	A	2173925
2 173 909	40	224	A	2173912	2 173 917	50	315	A	2173919	2 173 926	80	250	B	2 173 930
2 173 910	40	250	A	2173912	2 173 918	50	355	A	2173919	2 173 927	80	280	B	2 173 930
2 173 911	40	280	A	2173912	2 173 920	63	200	A	2173925	2 173 928	80	315	B	2 173 930
2 173 913	50	160	A	2173919	2 173 921	63	250	A	2173925	2 173 929	80	355	B	2 173 930

GUIDE POST - FÜHRUNGSSÄULE - COLONNA GUIDA

Notes

Material: 16MnCr5 - HRC 60÷62



Standard BMW



BMW CODE
2 174 493

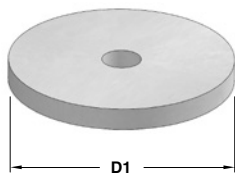
BMW CODE	D1	L1	Retainer Code	BMW CODE	D1	L1	Retainer Code	BMW CODE	D1	L1	Retainer Code
2 174 492	25	125	2 174 516	2 174 499	40	160	2 174 517	2 174 506	50	200	2 174 517
2 174 493	25	140	2 174 516	2 174 500	40	180	2 174 517	2 174 507	50	250	2 174 517
2 174 494	25	160	2 174 516	2 174 501	40	200	2 174 517	2 174 508	50	280	2 174 517
2 174 495	25	180	2 174 516	2 174 502	40	224	2 174 517	2 174 509	50	315	2 174 517
2 174 496	25	200	2 174 516	2 174 503	40	250	2 174 517	2 174 510	50	355	2 174 517
2 174 497	32	160	2 174 516	2 174 504	40	280	2 174 517				
2 174 498	32	200	2 174 516	2 174 505	50	160	2 174 517				


WASHER - FEDERSCHEIBE - RONDELLA PER COLONNE

Notes

Material: CK45

STOCK



	BMW CODE
	2 173 919
BMW CODE	D1
2 173 912	60
2 173 919	70
2 173 925	83
2 173 930	100

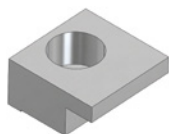
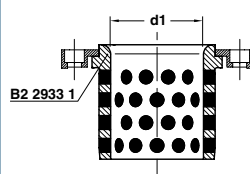
TOE CLAMP - HALTESTÜCK - RITEGNO PER BOCCOLA


STOCK

Notes

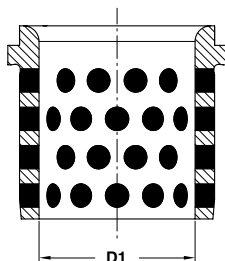
Material: CK45

Application example



	BMW CODE
	2 168 842
BMW CODE	d1
2 168 834	25÷50
2 168 842	63÷160
2 172 560	16
2 172 561	20

GUIDE BUSH DIN 9834 - FÜHRUNGSBUCHSE DIN 9834 - BOCCOLA DIN 9834



Notes

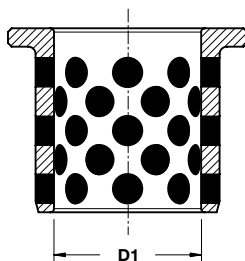
Material: Bronze + Graphite
HB > 190



	BMW CODE
	2 168 700
BMW CODE	D1
2 168 699	25
2 168 700	32
2 168 701	40
2 168 702	50
2 168 703	63
2 168 704	80
2 168 705	100
2 168 706	125
2 168 707	160

Standard BMW

GUIDE BUSH - FÜHRUNGSBUCHSE - BOCCOLA



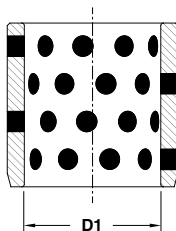
Notes

Material: Bronze + Graphite
HB > 190



	BMW CODE
	2 172 557
BMW CODE	D1
2 172 556	16
2 172 557	20


GUIDE BUSH - FÜHRUNGSBUCHSE - BOCCOLA



Notes

Material: Bronze + Graphite
HB > 190



	BMW CODE	
	2 172 559	
	BMW CODE	D1
	2 172 558	16
	2 172 559	20

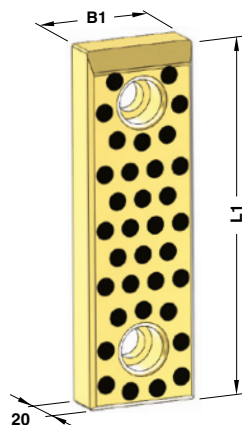
WEAR PLATE SELF-LUBRICATING VDI 3357
GLEITPLATTE BRONZE MIT FESTSCHMIERSTOFF VDI 3357
PIASTRA GUIDA AUTOLUBRIFICANTE VDI 3357

Notes

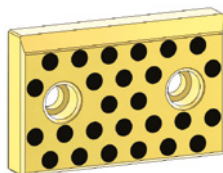
Material: Bronze + Graphite

HB > 190

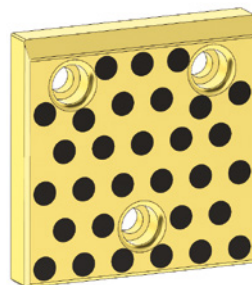
STOCK



FORM A



FORM B



FORM C

Standard BMW



BMW CODE

2 168 338

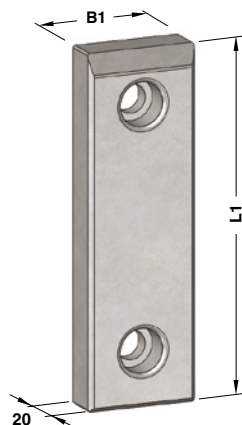
BMW CODE	B1	L1	FORM	BMW CODE	B1	L1	FORM
2 168 337	50	80	A	2 168 352	100	160	B
2 168 338	50	100	A	2 168 353	100	200	B
2 168 339	50	125	A	2 168 354	125	50	B
2 168 340	50	160	A	2 168 355	125	80	B
2 168 341	50	200	A	2 168 356	125	100	C
2 168 342	80	50	B	2 168 357	125	125	C
2 168 343	80	80	A	2 168 358	125	160	C
2 168 344	80	100	A	2 168 359	125	200	C
2 168 345	80	125	A	2 168 360	160	50	B
2 168 346	80	160	A	2 168 361	160	80	B
2 168 347	80	200	A	2 168 362	160	100	C
2 168 348	100	50	B	2 168 363	160	125	C
2 168 349	100	80	B	2 168 364	160	160	C
2 168 350	100	100	A	2 168 365	160	200	C
2 168 351	100	125	A				

WEAR PLATE STEEL VDI 3357
GLEITPLATTE STAHL VDI 3357
PIASTRA GUIDA IN ACCIAIO VDI 3357

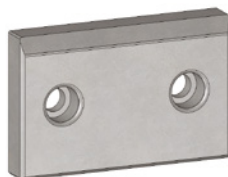
Notes

Material: X153CrMoV12 - HRC 58÷60

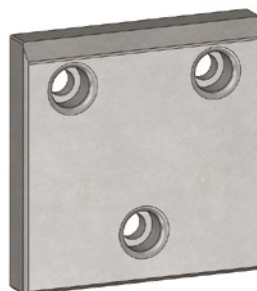
STOCK



FORM A



FORM B



FORM C



BMW CODE
2 168 367

BMW CODE	B1	L1	FORM	BMW CODE	B1	L1	FORM
2 168 366	50	80	A	2 168 381	100	160	B
2 168 367	50	100	A	2 168 382	100	200	B
2 168 368	50	125	A	2 168 383	125	50	B
2 168 369	50	160	A	2 168 384	125	80	B
2 168 370	50	200	A	2 168 385	125	100	C
2 168 371	80	50	B	2 168 386	125	125	C
2 168 372	80	80	A	2 168 387	125	160	C
2 168 373	80	100	A	2 168 388	125	200	C
2 168 374	80	125	A	2 168 389	160	50	B
2 168 375	80	160	A	2 168 390	160	80	B
2 168 376	80	200	A	2 168 391	160	100	C
2 168 377	100	50	B	2 168 392	160	125	C
2 168 378	100	80	B	2 168 393	160	160	C
2 168 379	100	100	A	2 168 394	160	200	C
2 168 380	100	125	A				

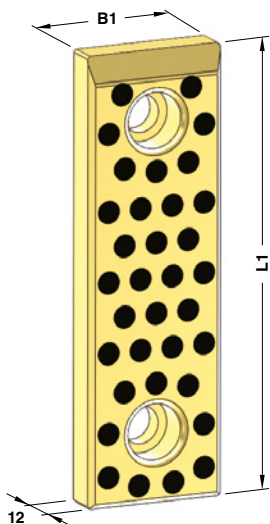
WEAR PLATE SELF-LUBRICATING VDI 3357 GLEITPLATTE BRONZE MIT FESTSCHMIERSTOFF VDI 3357 PIASTRA GUIDA AUTOLUBRIFICANTE VDI 3357

Notes

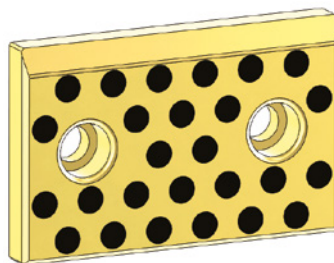
Material: Bronze + Graphite

HB > 190

STOCK



FORM A



FORM B

Standard BMW

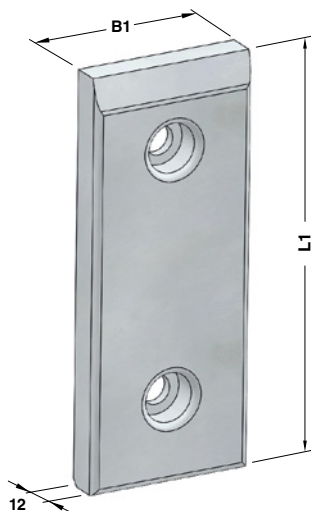
	BMW CODE
	2 169 172

BMW CODE	B1	L1	FORM	BMW CODE	B1	L1	FORM
2 169 171	30	80	A	2 169 184	50	160	A
2 169 172	30	100	A	2 169 185	50	200	A
2 169 173	30	125	A	2 169 186	60	80	A
2 169 174	30	160	A	2 169 187	60	100	A
2 169 175	30	200	A	2 169 188	60	125	A
2 169 176	40	80	A	2 169 189	60	160	A
2 169 177	40	100	A	2 169 190	60	200	A
2 169 178	40	125	A	2 169 191	80	80	A
2 169 179	40	160	A	2 169 192	80	100	A
2 169 180	40	200	A	2 169 193	80	125	A
2 169 181	50	80	A	2 169 194	80	160	A
2 169 182	50	100	A	2 169 195	80	200	A
2 169 183	50	125	A	3 007 727	80	50	B

WEAR PLATE STEEL VDI 3357
GLEITPLATTE STAHL VDI 3357
PIASTRA GUIDA IN ACCIAIO VDI 3357

Notes

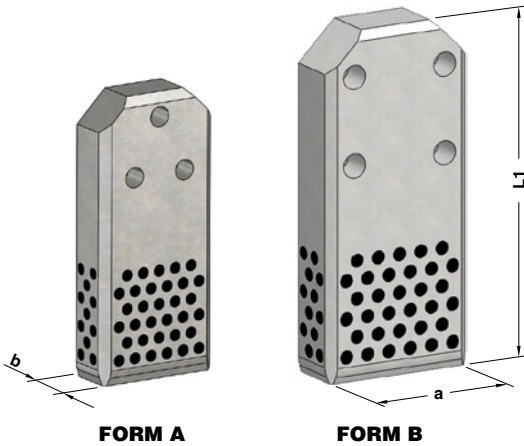
Material: 16MnCr5 - HRC 58±60



	BMW CODE
	2 170 889

BMW CODE	B1	L1	BMW CODE	B1	L1
2 170 888	30	80	2 170 901	50	160
2 170 889	30	100	2 170 902	50	200
2 170 890	30	125	2 170 903	60	80
2 170 891	30	160	2 170 904	60	100
2 170 892	30	200	2 170 905	60	125
2 170 893	40	80	2 170 906	60	160
2 170 894	40	100	2 170 907	60	200
2 170 895	40	125	2 170 908	80	80
2 170 896	40	160	2 170 909	80	100
2 170 897	40	200	2 170 910	80	125
2 170 898	50	80	2 170 911	80	160
2 170 899	50	100	2 170 912	80	200
2 170 900	50	125			

GIB VDI 3387 - FÜHRUNGLASCHE VDI 3387 - GUIDA VDI 3387



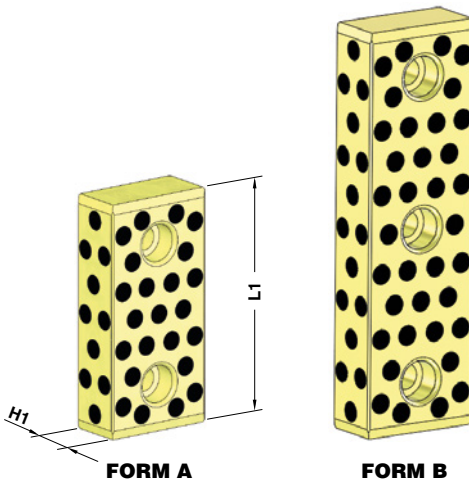
Notes
Material: CK45 + Graphite
HRC: 58÷60
 Only for replacement
 Nur für Reparatur
 Solo per riparazione

STOCK

	BMW CODE			
	2 168 880			
BMW CODE	a	b	L1	FORM
2 168 879	112	45	250	A
2 168 880	140	45	315	B
2 168 881	190	56	400	B
2 174 248	240	56	500	B

Standard BMW

GUIDE BAR VDI 3357 - FÜHRUNGSLEISTE VDI 3357 - LARDONE VDI 3357

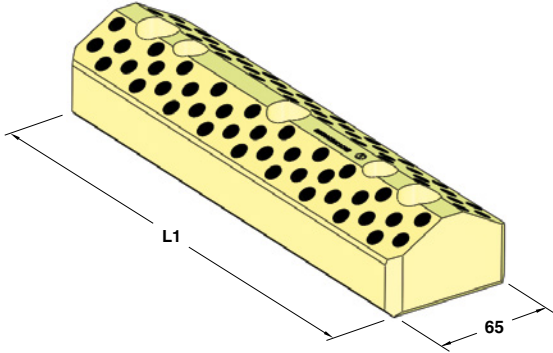


Notes
Material: Bronze + Graphite - HB >190

STOCK

	BMW CODE		
	2 168 884		
BMW CODE	H1	L1	FORM
2 168 883	30	125	A
2 168 884	30	160	A
2 168 885	30	200	B
2 168 886	40	125	A
2 168 887	40	160	A
2 168 888	40	200	B

**"V" DRIVER SELF-LUBRICATING VDI 3357
PRISMENFÜHRUNG BRONZE MIT FESTSCHMIERSTOFF VDI 3357
GUIDA A "V" AUTOLUBRIFICANTE VDI 3357**

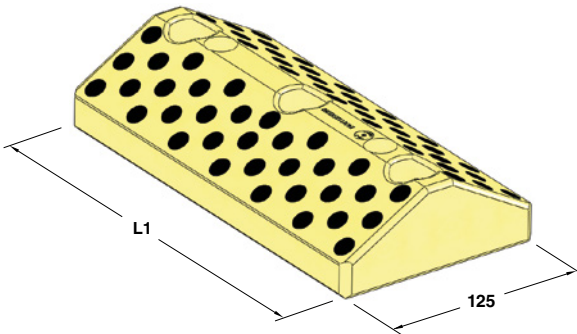


Notes
Material: Bronze + Graphite - **HB** >190

STOCK ⇄

	BMW CODE
	2 168 900
BMW CODE	L1
2 168 899	150
2 168 900	200
2 168 901	250
2 168 902	300

**"V" DRIVER SELF-LUBRICATING VDI 3357
PRISMENFÜHRUNG BRONZE MIT FESTSCHMIERSTOFF VDI 3357
GUIDA A "V" AUTOLUBRIFICANTE VDI 3357**

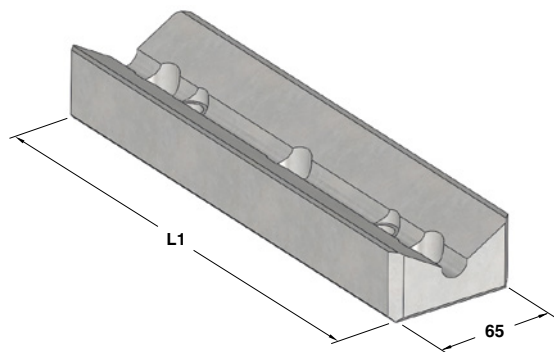


Notes
Material: Bronze + Graphite - **HB** >190

STOCK ⇄

	BMW CODE
	2 168 904
BMW CODE	L1
2 168 903	150
2 168 904	200
2 168 905	250
2 168 906	300

"V" DRIVER VDI 3357 - PRISMENFÜHRUNG VDI 3357 - GUIDA A "V" VDI 3357



Notes

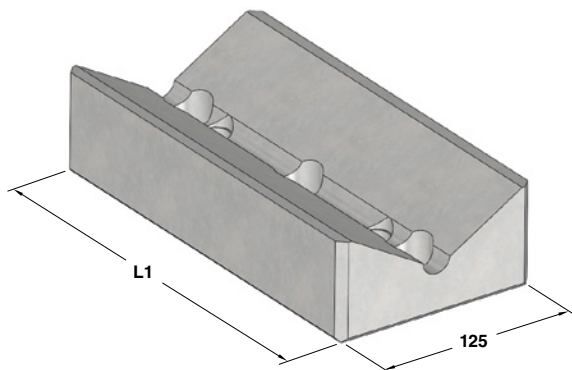
Material: CK45 - HRC: 58÷60

STOCK

	BMW CODE
	2 168 919
BMW CODE	L1
2 168 918	150
2 168 919	200
2 168 920	250
2 168 921	300

Standard BMW

"V" DRIVER VDI 3357 - PRISMENFÜHRUNG VDI 3357 - GUIDA A "V" VDI 3357



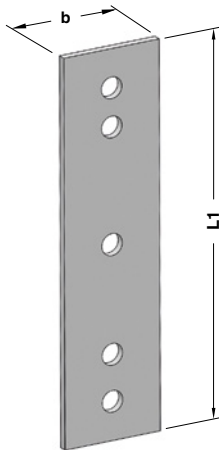
Notes

Material: CK45 - HRC: 58÷60

STOCK

	BMW CODE
	2 168 923
BMW CODE	L1
2 168 922	150
2 168 923	200
2 168 924	250
2 168 925	300

**DISTANCE PLATE FOR "V" DRIVER
HÖHENAUSGLEICH FÜR PRISMENFUHRUNG
DISTANZIALE PER GUIDA A "V"**



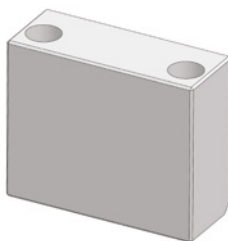
Notes
Material: St52

STOCK

	BMW CODE
	2 172 953

BMW CODE	b	L1
2 172 952	65	150
2 172 953	65	200
2 172 954	65	250
2 172 955	65	300
2 172 956	125	150
2 172 957	125	200
2 172 958	125	250
2 172 959	125	300

SLIDE STOP BLOCK - SCHIEBERRANSCHLAG - ARRESTO SLITTA



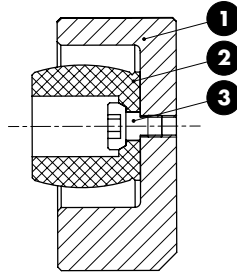
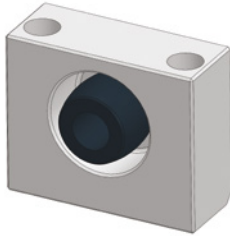
Notes
Material: CK45

STOCK

	BMW CODE
	2 175 393

BMW CODE
2 175 393

SLIDE STOP BLOCK - SCHIEBERRANSCHLAG - ARRESTO SLITTA



Notes

- 1** Material: CK45
- 2** Material: CO-Polyester Elastomer
- 3** Screw



BMW CODE
2 174 768

BMW CODE
2 174 768

Standard BMW

ANTI-REBOUND ELASTOMER - DÄMPFUNGSELEMENT - AMMORTIZZATORE ANTIRIMBALZO



Notes

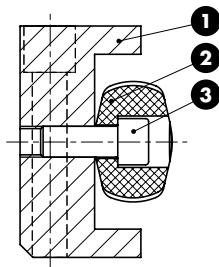
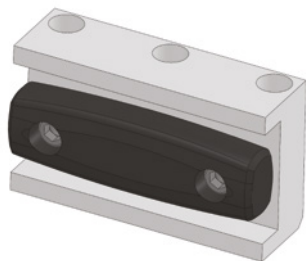
Material: CO-Polyester Elastomer



BMW CODE
2 174 767

BMW CODE
2 174 767

SLIDE STOP BLOCK - SCHIEBERRANSCHLAG - ARRESTO SLITTA



Notes

- 1** Material: CK45
- 2** Material: CO-Polyester Elastomer
- 3** M10x30 DIN 912

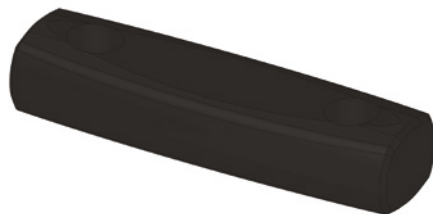
STOCK



BMW CODE
2 174 838

BMW CODE
2 174 838

ANTI-REBOUND ELASTOMER - DÄMPFUNGSELEMENT - AMMORTIZZATORE ANTIRIMBALZO



Notes

Material: CO-Polyester Elastomer

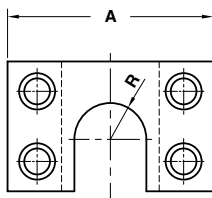
STOCK



BMW CODE
2 174 837

BMW CODE
2 174 837

COUPLING PLATE – BEFESTIGUNGSPLATTE - STAFFA DI FISSAGGIO



Notes

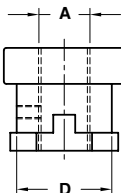
Material: CK45

STOCK

ORDER EXAMPLE	BMW CODE	
	2 175 052	
BMW CODE	A	R
2 175 051	100	20
2 175 052	120	25

Standard BMW

COUPLING NUT - KUPPLUNGSMUTTER - AGGANCIAMENTO STAFFA



Notes

Material: CK45

STOCK

ORDER EXAMPLE	BMW CODE	
	2 175 054	
BMW CODE	A	D
2 175 053	M16x1,5	37
2 175 054	M20x1,5	37
2 175 055	M27x2	47
2 175 056	M36x2	47

SHIM - PRÄGESTEMPEL - SPESSORE



Notes

Material: St37

STOCK



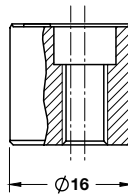
BMW CODE

2 168 546

BMW CODE

2 168 546

VISUAL LOCATOR SETTING PUNCH STEMPEL F. ENTGASUNGSNOPPEN PUNZONE DI VISUALIZZAZIONE



Notes

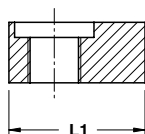
Material: X155CrVMo12 - **HRC:** 55±58

STOCK

	BMW CODE	Option
	2 171 527	U 25

BMW CODE	Option	BMW CODE	Option	BMW CODE	Option
2 169 003	2 digit number	2 171 529	B + 2 digit number	2 173 812	P + number 3
2 171 527	U + 2 digit number	2 171 530	2 digit number	2 173 813	P + number 4
2 171 528	A + 2 digit number	2 171 531	L	2 173 714	LP + number 1
2 175 080	CN	2 171 532	R	2 173 715	LP + number 2
2 171 530	C	2 174 593	-	2 173 716	RP + number 1
2 169 002	-	2 173 712	P + number 1	2 173 717	RP + number 2
2 171 533	2 digit number	2 173 713	P + number 2		

KEY - PASSFEDER - CHIAVETTA



Notes

Material: CK45

STOCK



BMW CODE

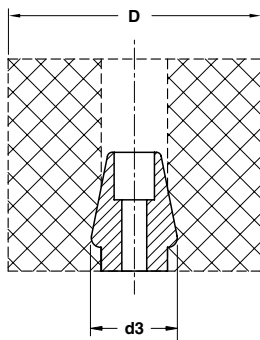
2 175 929

BMW CODE	L1
2 175 928	16
2 175 929	18
2 175 930	20
2 175 931	22
2 175 932	26
2 175 933	32
2 175 934	35
2 175 935	40

Standard BMW

B2 3925 11

ELASTOMER SPRING PIN - AUFNAHMEBOLZEN - PERNO PER MOLLE



Notes

Material: CK45

Only for replacement
Nur für Reparatur
Solo per riparazione

STOCK

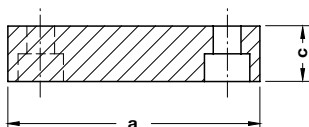
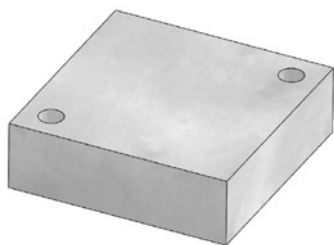


BMW CODE

2 169 345

BMW CODE	D	d3
2 169 344	63	28
2 169 345	80-100	32
2 169 346	125	38

BACKING PLATE - DISTANZKAPPE - REAZIONE PER CILINDRO



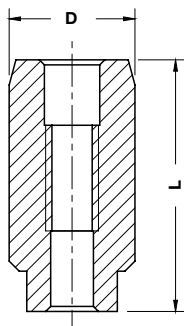
Notes

Material: 90MnCrV8 - **HRC:** 50±52

STOCK

ORDER EXAMPLE	BMW CODE	
	2 171 499	
BMW CODE	a	c
2 171 498	40	12
2 171 499	60	15
2 171 500	70	15
2 171 501	100	20
2 175 147	110	20

LOCATING PIN - ZENTRIERBOLZEN - CENTRAGGIO



Notes

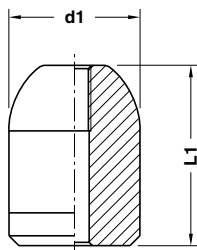
Material: 16MnCr5 - **HRC:** 58±60

Only for replacement
Nur für Reparatur
Solo per riparazione

STOCK

ORDER EXAMPLE	BMW CODE	
	2 169 053	
BMW CODE	D	L
0 970 435	25	50
2 169 053	25	65
0 970 413	32	50
2 169 054	32	65
0 970 412	40	50
2 169 055	40	65
0 970 411	50	50
2 169 056	50	65

LOCATING PIN - ZENTRIERBOLZEN - CENTRAGGIO



Notes

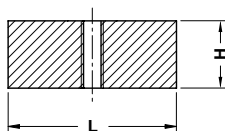
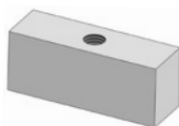
Material: 16MnCr5 - **HRC:** 58÷60

STOCK

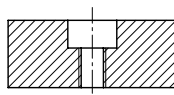
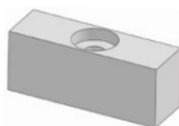
ORDER EXAMPLE	BMW CODE	
	2 172 411	
BMW CODE	d1	L1
2 172 410	22	45
2 172 411	32	50
2 172 412	40	55
2 172 413	50	55
2 173 658	56	80

Standard BMW

KEY - PASSFEDER - CHIAVETTA



FORM A



FORM B

Notes

Material: CK45

STOCK

ORDER EXAMPLE	BMW CODE	FORM	
	2 172 224	A	
BMW CODE	H	L	FORM
2 172 053	14	80	A
2 172 224	30	80	A
2 172 808	14	50	A
2 172 809	30	120	A
2 174 226 A	20	50	A
2 174 226 B	20	50	B
2 174 227 A	20	80	A
2 174 227 B	20	80	B
2 174 835	10	50	B
2 174 836	10	80	B

LIFTING PIN - TRAGBOLZEN MIT FALLRINGSICHERUNG - PERNO DI SOLLEVAMENTO



Respect the max load
 Maximale Nutzlast beachten
 Rispettare il carico Max

WARNING - ACHTUNG - ATTENZIONE:

For safety reason, please consider always that the weight of the die has to be supported by just 2 lifting pins.

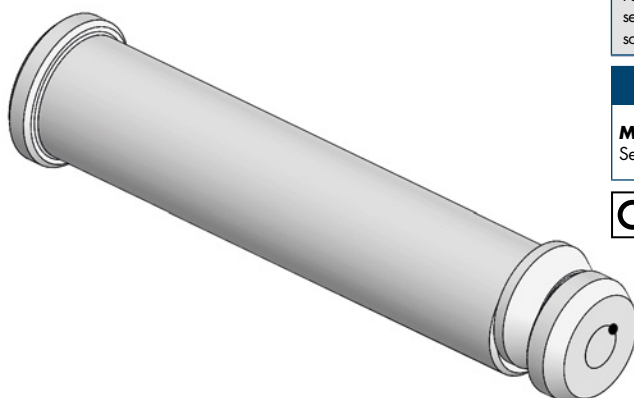
Aus Sicherheitsgründen stets berücksichtigen, dass zwei Tragbolzen das gesamte Werkzeuggewicht tragen müssen.

Per ragioni di sicurezza, considerare sempre che il peso dello stampo deve essere sopportato da 2 soli perni.

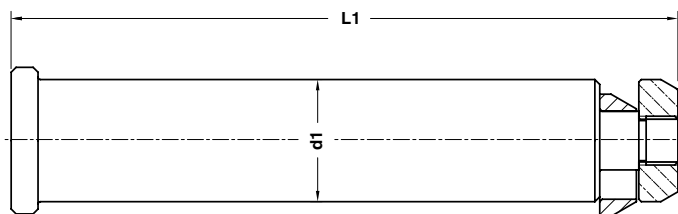
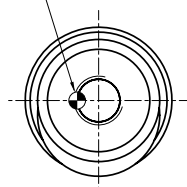
Notes

Material:

See table - siehe Tabelle - vedi tabella



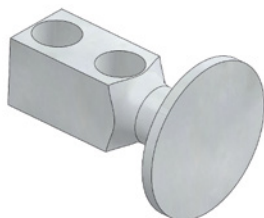
Security Pin



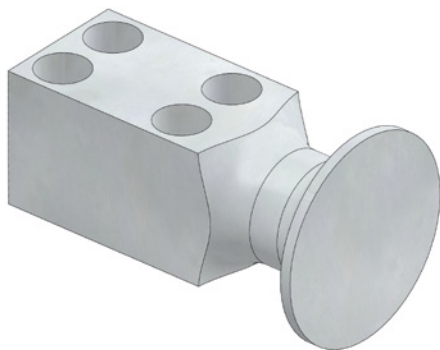
	BMW CODE
	2 168 396

BMW CODE	Max load (kg)	Max die weight (kg)	L1	d1	Material
2 168 395	3200	6400	175	32	CK45
2 168 396	5000	10000	225	40	CK45
2 168 397	8000	16000	273	50	CK45
2 168 398	12500	25000	347	63	CK45
2 168 399	31500	63000	422	76	42CrMo4 + QT

LIFTING BRACKET WITH ROPE STOP SAFETY
TRAGZAPFEN MIT SEILSICHERUNG
STAFFA DI SOLLEVAMENTO CON SICUREZZA FERMAFUNE



FORM A



FORM B



Respect the max. load
 Maximale Nutzlast beachten
 Rispettare il carico max.

WARNING - ACHTUNG - ATTENZIONE:

For safety reason, please consider always that the weight of the die has to be supported by just 2 lifting brackets.

Aus Sicherheitsgründen stets berücksichtigen, dass zwei Tragzapfens das gesamte Werkzeuggewicht tragen müssen.

Per ragioni di sicurezza, considerare sempre che il peso dello stampo deve essere sopportato da 2 sole staffe.

Notes

Material: CK45 - 700÷800 N/mm²

Screws not included



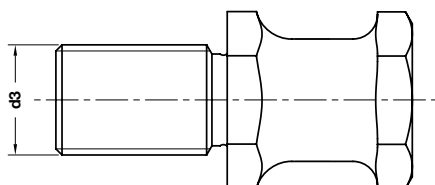
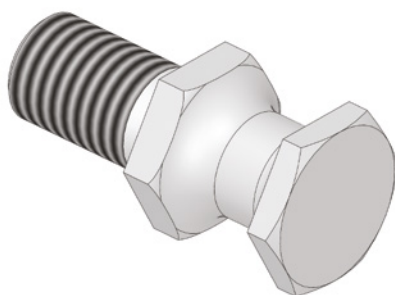
Standard BMW



BMW CODE
3 275 834

BMW CODE	Max load (kg)	Max die weight (kg)	FORM	BMW CODE	Max load (kg)	Max die weight (kg)	FORM
2 169 231	320	640	A	3 275 839	5000	10000	A
3 275 834	630	1260	A	3 275 840	8000	16000	B
3 275 835	1250	2500	A	2 169 238	12500	25000	B
3 275 836	2000	4000	A	2 169 239	20000	40000	B
3 275 838	3200	6400	A				

LIFTING PIN VDI 3366
TRAGSCHRAUBE VDI 3366
PERNO DI SOLLEVAMENTO VDI 3366



Respect the max load
 Maximale Nutzlast beachten
 Rispettare il carico Max

WARNING - ACHTUNG - ATTENZIONE:

For safety reason, please consider always that the weight of the die has to be supported by just 2 lifting pins.

Aus Sicherheitsgründen stets berücksichtigen, dass zwei Tragbolzen das gesamte Werkzeuggewicht tragen müssen.

Per ragioni di sicurezza, considerare sempre che il peso dello stampo deve essere sopportato da 2 soli perni.

Notes

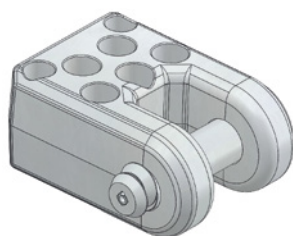
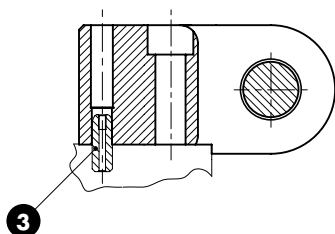
Material: CK45 - 700÷800 N/mm²



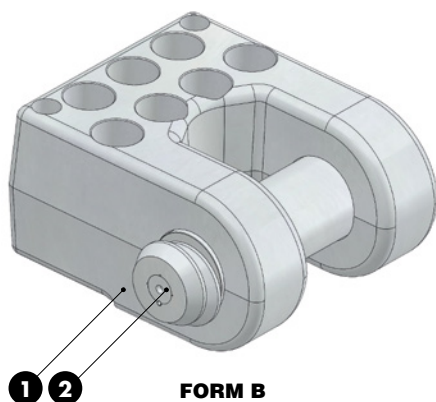
	BMW CODE
	2 172 289

BMW CODE	Max load (kg)	Max die weight (kg)	d3
2 172 288	320	640	M16
2 172 289	500	1000	M20

LIFTING BRACKET WITH PIN AND LOCATING PINS TRAGWANGE MIT TRAGBOLZEN UND ZENTRIERBOLZEN STAFFA DI SOLLEVAMENTO COMPLETA DI PERNO E CENTRAGGI



FORM A



FORM B



Respect the max load
Maximale Nutzlast beachten
Rispettare il carico Max

WARNING - ACHTUNG - ATTENZIONE:
For safety reason, please consider always that the weight of the die has to be supported by just 2 lifting brackets.

Aus Sicherheitsgründen stets berücksichtigen, dass zwei Tragwagen das gesamte Werkzeuggewicht tragen müssen.

Per ragioni di sicurezza, considerare sempre che il peso dello stampo deve essere sopportato da 2 sole staffe.

Notes

- 1** Material: St52
- 2** Material: CK45
- 3** B2 4068 2
Material: 16MnCr5 - HRC: 58÷60

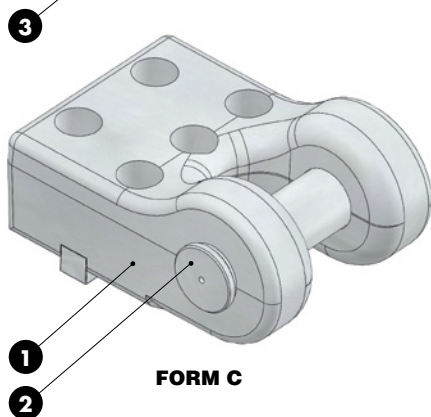
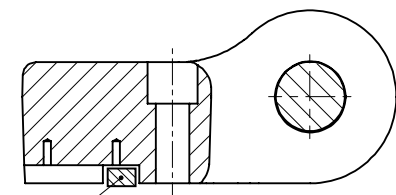
Screws not included



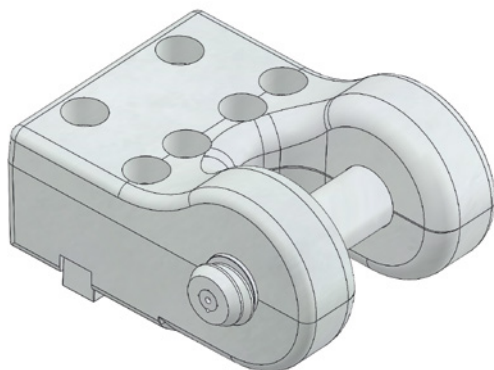
BMW CODE
2 174 861

BMW CODE	Max load (kg)	Max die weight (kg)	FORM	BMW CODE	Max load (kg)	Max die weight (kg)	FORM
2 174 690	3200	6400	A	2 175 233	12500	25000	A
2 174 861	5000	10000	A	2 174 694	18000	36000	B
2 174 692	8000	16000	A				

LIFTING BRACKET WITH PIN AND KEYS TRAGWANGE MIT TRAGBOLZEN UND PASSFEDER STAFFA DI SOLLEVAMENTO COMPLETA DI PERNO E CHIAVETTE



FORM C



FORM D



Respect the max load
Maximale Nutzlast beachten
Rispettare il carico Max

WARNING - ACHTUNG - ATTENZIONE:
For safety reason, please consider always that the weight of the die has to be supported by just 2 lifting brackets.

Aus Sicherheitsgründen stets berücksichtigen, dass zwei Tragwagen das gesamte Werkzeuggewicht tragen müssen.

Per ragioni di sicurezza, considerare sempre che il peso dello stampo deve essere sopportato da 2 sole staffe.

Notes

- 1** Material: St52
- 2** Material: CK45 - **FORM C**
- 2** Material: 42CrMo4 - **FORM D**
- 3** C14.20 - Material: CK45

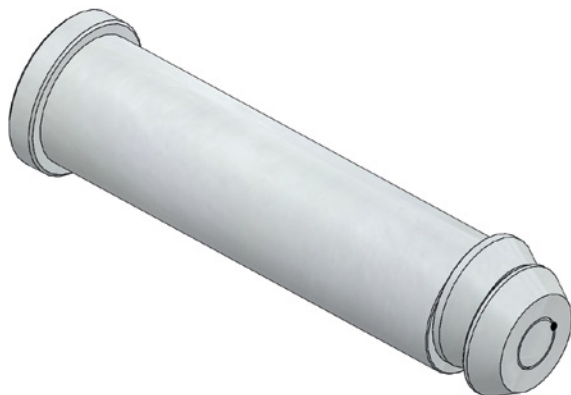
Screws not included



	BMW CODE
	2 174 864

BMW CODE	Max load (kg)	Max die weight (kg)	FORM
2 174 863	25000	50000	C
2 174 864	31500	63000	D

REPLACEMENT LIFTING PIN FOR LIFTING BRACKET BMW ERSATZTRAGBOLZEN FÜR TRAGWANGE BMW PERNO DI RICAMBIO PER STAFFA DI SOLLEVAMENTO BMW



Respect the max load
Maximale Nutzlast beachten
Rispettare il carico Max

WARNING - ACHTUNG - ATTENZIONE:

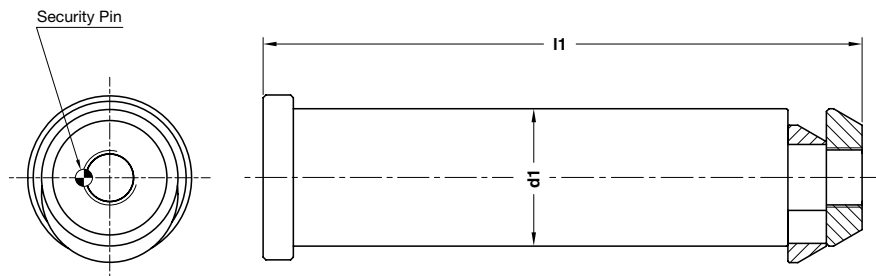
For safety reason, please consider always that the weight of the die has to be supported by just 2 lifting pins.

Aus Sicherheitsgründen stets berücksichtigen, dass zwei Tragbolzen das gesamte Werkzeuggewicht tragen müssen.

Per ragioni di sicurezza, considerare sempre che il peso dello stampo deve essere sopportato da 2 soli perni.



Standard BMW



	BMW CODE
	2 174 867

BMW CODE	Max load (kg)	Max die weight (kg)	l1	d1	Material
2 168 400	3200	6400	158	30	CK45
2 174 867	5000	10000	187	40	CK45
2 168 402	8000	16000	220	50	CK45
2 174 868	12500	25000	246	60	CK45
2 168 404	18000	36000	305	80	CK45
2 174 865	25000	50000	360	80	CK45
2 174 866	31500	63000	405	80	42CrMo4 + QT

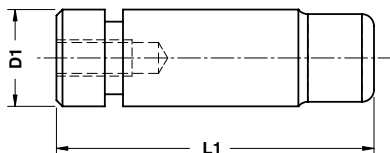
PAD RETAINER PIN - STECKBOLZEN - PERNO DI ARRESTO



Notes

Material: 42CrMo4
800÷1000 N/mm²

STOCK



BMW CODE
2 173 660

BMW CODE	D1	L1	BMW CODE	D1	L1
2 173 659	32	111	2 173 663	32	128
2 173 660	40	145	2 173 664	40	165
2 173 661	50	171	2 173 665	50	196
2 173 662	63	206	2 173 666	63	241

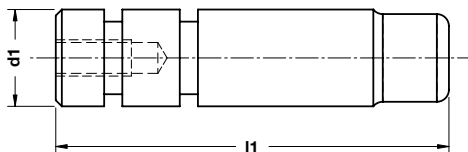
PAD RETAINER PIN - STECKBOLZEN - PERNO DI ARRESTO



Notes

Material: 42CrMo4
Only for replacement
Nur für Reparatur
Solo per riparazione

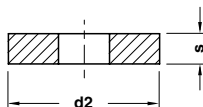
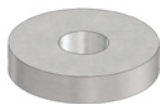
STOCK



BMW CODE
2 173 668

BMW CODE	d1	l1	BMW CODE	d1	l1
2 173 667	32	136	2 173 671	32	153
2 173 668	40	177	2 173 672	40	197
2 173 669	50	211	2 173 673	50	236
2 173 670	63	256	2 173 674	63	291

WASHER - SCHEIBE - RONDELLA



STOCK

Notes

Material: CK45 - HRC: 45÷50



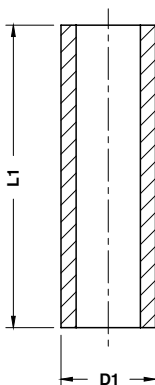
BMW CODE

0 281 619

BMW CODE	d2	s
0 281 618	56	10
0 281 619	42	8
0 281 620	35	6
2 171 891	68	10

B2 6201 12

SPACER TUBE - DISTANZBUCHSE - TUBO DISTANZIALE



Notes

Material: St37 - HRC: 60÷64

Delivery time
Lieferzeit in Werktagen
Tempi di spedizione

STOCK = ●

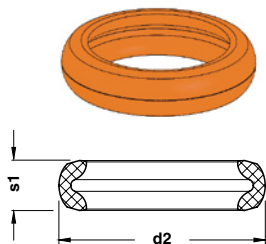
10 = ○



BMW CODE
2 168 800

BMW CODE	D1	L1	Delivery Time	BMW CODE	D1	L1	Delivery Time	BMW CODE	D1	L1	Delivery Time	BMW CODE	D1	L1	Delivery Time
0 266 957	16	125	●	2 168 816	25	80	●	2 168 830	36	150	●	2 173 792	16	<200	○
2 168 802	16	50	●	2 168 817	25	100	●	2 168 831	36	200	●	2 173 793	20	<200	○
2 168 803	16	63	●	2 168 818	25	125	●	2 168 832	42	150	●	2 173 794	25	<200	○
2 168 804	16	80	●	2 168 819	25	200	●	2 168 833	42	200	●	2 173 795	30	<200	○
2 168 807	16	200	●	2 168 820	30	50	●	2 171 893	16	>200	○	2 173 796	36	<200	○
2 168 808	20	50	●	2 168 821	30	63	●	2 171 894	20	>200	○	2 173 797	42	<200	○
2 168 809	20	63	●	2 168 822	30	80	●	2 171 895	25	150	●	3 021 663	16	100	●
2 168 811	20	100	●	2 168 823	30	100	●	2 171 896	25	>200	○	3 021 664	36	100	●
2 168 812	20	125	●	2 168 824	30	125	●	2 171 897	30	>200	○	3 021 666	20	80	●
2 168 813	20	200	●	2 168 825	30	150	●	2 171 898	36	>200	○				
2 168 814	25	50	●	2 168 826	30	200	●	2 171 899	42	>200	○				
2 168 815	25	63	●	2 168 829	36	125	●	2 172 153	36	80	●				

BUFFER - STOSSDÄMPFER - AMMORTIZZATORE



STOCK

Notes

Material: CO-Polyester Elastomer

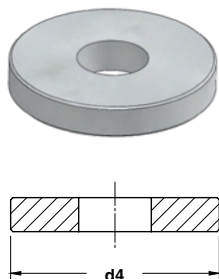


BMW CODE

2 173 881

BMW CODE	d2	s1	Shore	Max load (kN)
2 173 880	26,2	7,7	55D	5500
2 173 881	32,1	10,8	72D	9000
2 173 882	46,3	17,7	72D	20000
2 173 883	54,6	21,6	55D	30000
2 173 884	61,8	21,5	55D	46000
2 173 885	78,2	30	55D	75000

WASHER - SCHEIBE - RONDELLA



STOCK

Notes

Material: CK45

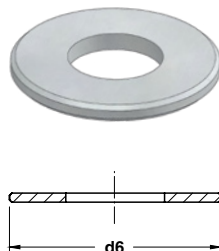


BMW CODE

2 175 382

BMW CODE	d4
2 175 381	30
2 175 382	35
2 175 383	50
2 175 384	65
2 175 385	70
2 175 386	90

WASHER - SCHEIBE - RONDELLA



STOCK

Notes

Material: 90MnCrV8 - HRC: 56

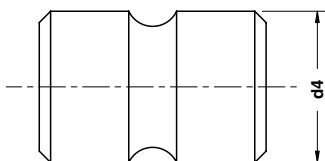


BMW CODE

2 175 388

BMW CODE	d6
2 175 387	30
2 175 388	35
2 175 389	50
2 175 390	65
2 175 391	70
2 175 392	90

SHOCK ABSORBER - HALTELEMENT - AMMORTIZZATORE



Notes

Material: CO-Polyester Elastomer

STOCK



BMW CODE
2 173 698

BMW CODE	d4
2 173 697	40
2 173 698	50
2 173 699	63
2 173 700	80

Standard BMW

